

Vintage style resin cobblestones

Attractive antique style resin paving



Vintage style resin cobblestones are a beautiful and durable alternative to traditional paving surfaces. Their striking appearance means they are ideal for traffic demarcation schemes, whilst the speed of the application process a base layer allows areas to be reopened to traffic within 30 minutes.

As well as being aesthetically pleasing they also help contribute to road safety, being both slip resistant* and non-icing. Several colour and size combinations are available and the cobblestones can be laid all in the one colour or can be alternated throughout the surface to further enhance the antique appearance.

Typical uses and applications

Vintage style resin cobblestone paving is ideal for traffic calming and demarcation zones:

- Roundabouts
- Car parks
- Reduced-speed zones
- Pedestrian areas
- Street arrangements

It is also perfect anywhere a vintage or rustic appearance is required.

Colours

There are six stone colours available as standard - 3 plain & 3 speckled. The plain blends are available in straight cut only, while the speckled blends come in both straight cut & rustic. Cobblestones come in 100mm² and 150mm² versions, both 5.5mm thick.



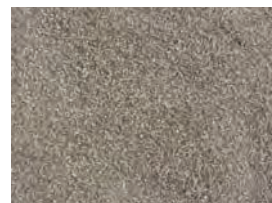
Rustic cut



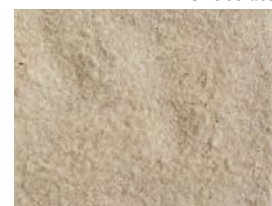
Straight cut



Canella



Chocolate



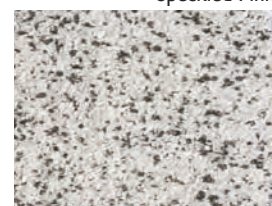
Porcelain



Speckled Cream



Speckled Pink



Speckled Grey